

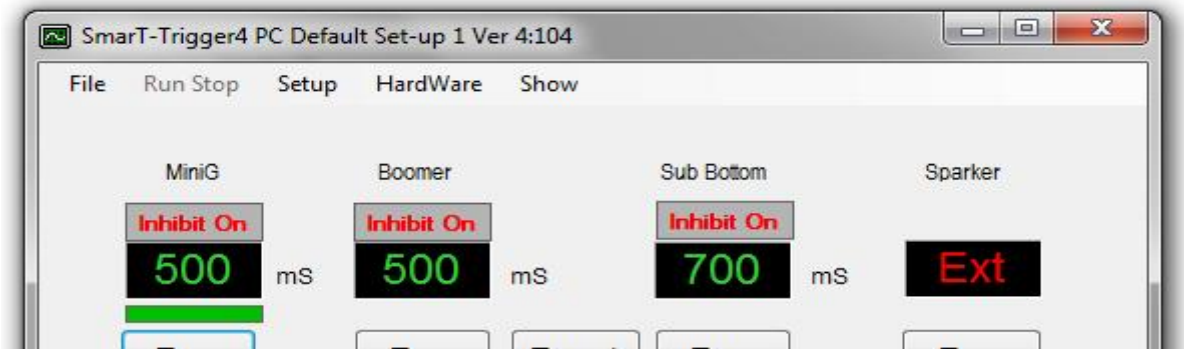
Smart Trigger PC software Ver4:104 Release notes

Changes to settings form in PC software Ver 4:104 Rovtec Systems July 2014

Page 1

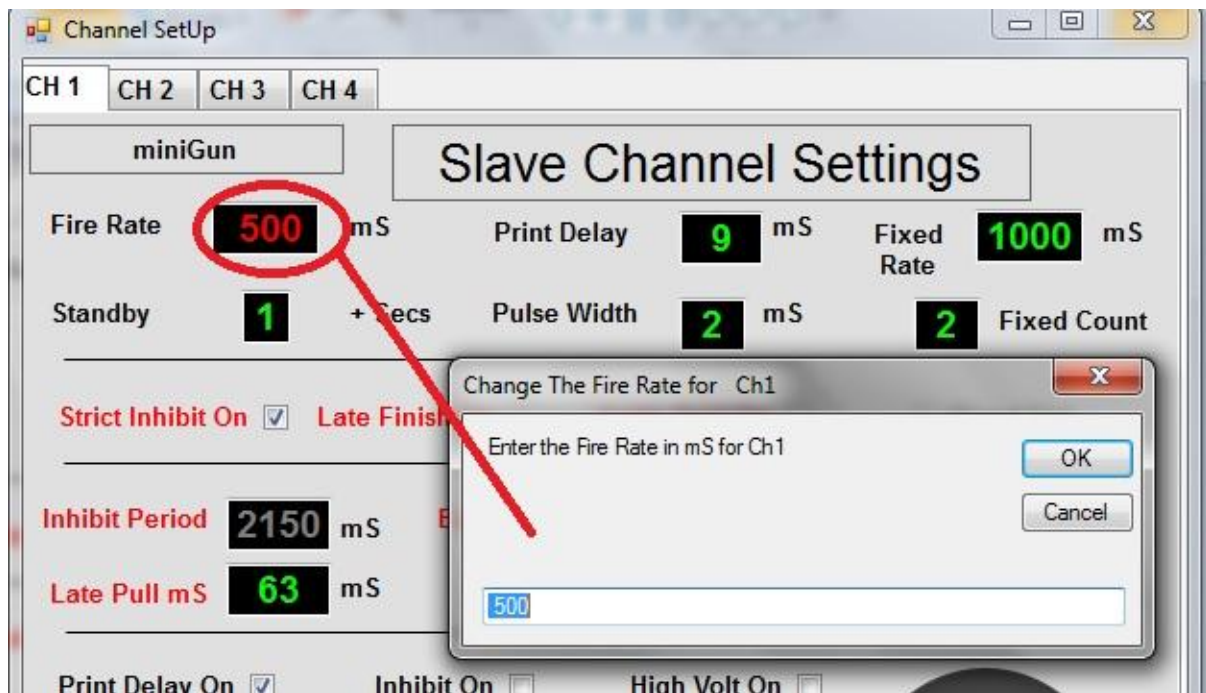
Identify Ver 4:104

Firstly to identify that one is running the latest Ver 4:104 (July 2014) ensure the version number is shown in the caption bar of the main control program as shown below



There have been some changes made to the Channel Set Up form to ensure all parameters are changed in precisely the same way and with the same key or mouse strokes. Ver 4:103 had issues with some parameters not being set correctly and some indeed not being saved.

There were also issues to do with the particular order in which certain channel parameters were changed, These and several other issues to do with Parameter changing saving and sending have been addressed. **Ver 4:104** addresses these issues in the following way. .



Smart Trigger PC software Ver4:104 Release notes

Changes to settings form in PC software Ver 4:104 Rovtec Systems July 2014

Page 2

Clicking on any value box as shown in the image of the setup form on the previous page , will bring up the relevant input box into which the user must edit the CURRENT SETTING and PRESS OK Button, on pressing the OK button the new value will checked for validity and entered into the parameter text box, the Foreground of the colour will show RED once it has been changed by the user, The normal appearance of all unchanged parameter values are shown in GREEN coloured text.

It's now possible to press the tab button moving the focus across to the next parameter in logical order from Left to Right across and down the form and when any particular parameters text is highlighted simply pressing ENTER key brings up the same input box as if one had used the mouse to click on the control.

When a TICK BOX is highlighted pressing the SPACE bar will toggle the value of the tick box TRUE or FALSE once again pressing the tab button will move the focus to the next tick box or parameter value text box. Eventually the focus will move to the SEND button which when pressed will send all the changed parameters to the channel in the interface unit , and all the Texts will revert to GREEN in colour the values will be saved to the windows registry and will be the default values of this channel from now on.

Ver4:104 addresses the previous problems of the Channel names not being saved as has the order of turning on fixed fire or inhibit , it doesn't matter in which order the parameters are changed , Version 4:103 had issues in this area of the program, (channels were turning off in Ver 4:103)

This approach has been copied to the Master Channel set up form and the Fixed Fire setup form

Clicking on any parameter will bring up the appropriate input box and then pressing the tab button will move the focus to the next logical control parameter or TICKBOX.

Some further value checking is done on some parameters to ensure no non valid values can be entered for these parameters Pulse Width , Channel Standby time, Pre inhibit Block Time etc are now checked more stringently for non valid or in-appropriate values .

Smart Trigger PC software Ver4:104 Release notes

Changes to settings form in PC software Ver 4:104 Rovtec Systems July 2014

Page 3

VER 4:104 and the EXT settings

When one or any channel is set to EXTERNAL mode, It is now no longer possible to change all channels modes to RUN STOP STDBY using either the menus commands or the individual Function Keys F5-F6-F7. This was allowing some channels previously set to External mode to become out of sequence with the displayed screen settings and the actual settings in the interface unit and let to erratic operation.

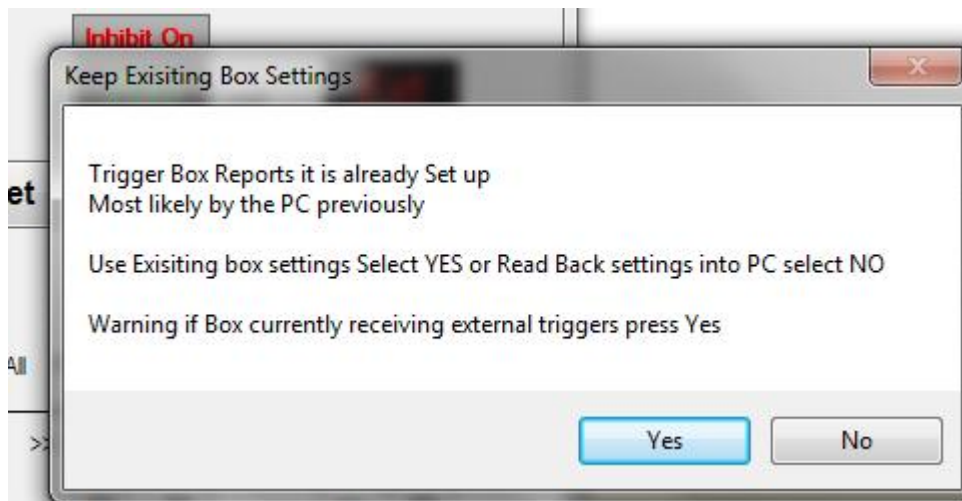
When EXTERNAL mode is selected for any channel is it not possible to press the Green Focus bar and bring up the Fixed shooting control as was the case in Ver 4:103 ,

It is also no longer possible to adjust the print delay with the Scroll left right keys UP DOWN print delay values , when that channel is in EXTERNAL mode , a new print delay value can be entered by clicking on the PRINT delay value , and entering a value of Zero will now turn it off for that channel .

Ver 4:103 Print delay not turning off

Ver 4:104 cures the problem of Print delay not being switched off when a value of zero was entered for the Print delay input box. Print Delay could only be turned on and off in the SETUP control.

Ver 4:104 Detects box already set up (External triggers present)



A warning has been added in PC Ver 4:104 software to alert the user that if external triggers are currently being received by the box then its best to press Yes and accept the settings as reading the settings back from the box is not possible when it is working at inhibiting and timing external triggers.

Smart Trigger PC software Ver4:104 Release notes

Changes to settings form in PC software Ver 4:104 Rovtec Systems July 2014

Page 4

(External triggers present box is Booting , Setting up , Reading Settings back etc etc

In fact the user may have to press YES several times to get out of this situation while triggers are being received, Ver 4:104 firmware in the interface unit will prevent this occurring in the future but meanwhile with PC Software be advised that it is not recommended to read back the box settings when the box is busy with external triggers.

In fact in any condition its not appropriate to have triggers arriving at the external trigger input of the master channel when the box is booting up and being setup by the PC or auto setting its self up,